

THE ADVENTURES OF LEFTY AND RIGHTY: THE WINDY CITY

MATCH THE FUN FACTS

Directions: Draw a line to match the Fun Facts that go together.



1.  Soldier Field

The largest planetarium in the Western Hemisphere.

2.  The Bean

Chicago's indoor public aquarium.

3.  The Chicago Water Taxi

The American League MLB team from Chicago.

4.  Willis Tower

The largest planetarium in the Western Hemisphere.

5.  Navy Pier

A stadium on the Near South Side of Chicago where the Chicago Bears play.

6.  The Shedd Aquarium

The transit system serving Chicago and the surrounding suburbs.

7.  The Field Museum

Located in Millennium Park and named Cloud Gate.

8.  The Adler Planetarium

A 108-story skyscraper in Chicago, formerly named The Sears Tower.

9.  Chicago White Sox

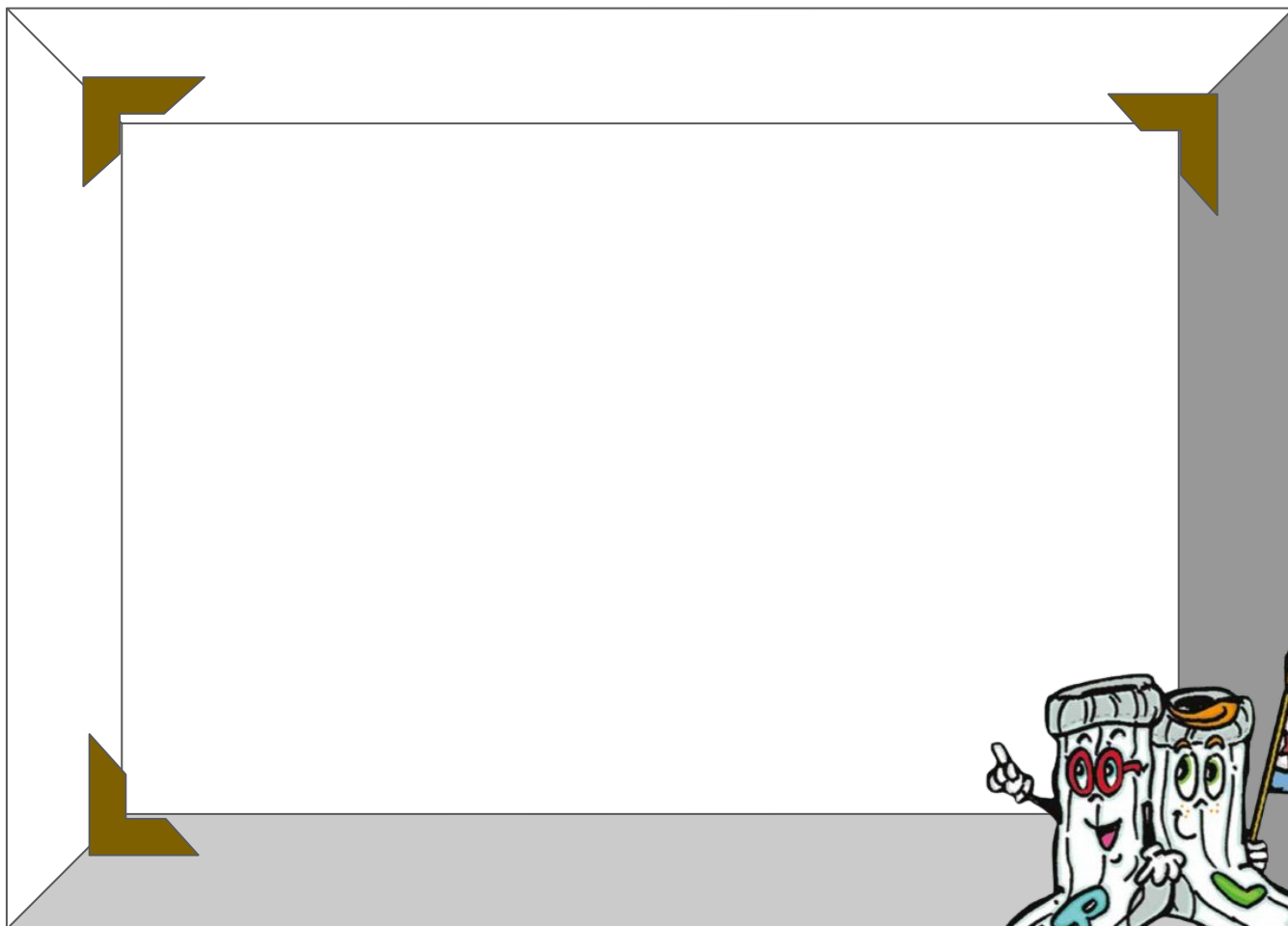
One of the largest natural history museums in the world.

10.  The Chicago "L"

A 3,300 foot long pier on the shoreline of Lake Michigan.

SELFIE TIME!!!

Directions: Draw yourself with your favorite Chicago landmark from The Adventures of Lefty and Righty: The Windy City.



Write why you chose this landmark.

Four sets of horizontal writing lines, each consisting of a solid top line, a dashed middle line, and a solid bottom line, providing space for the student's response.

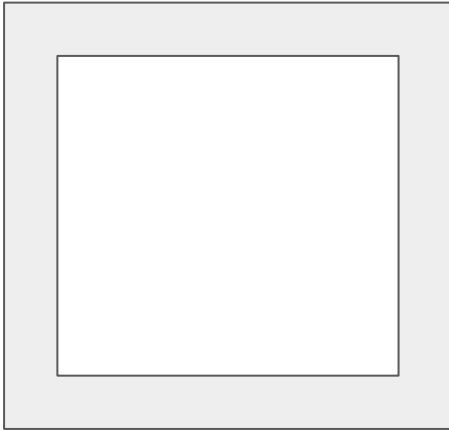
THE ADVENTURES OF LEFTY AND RIGHTY: THE WINDY CITY

STORY SEQUENCE

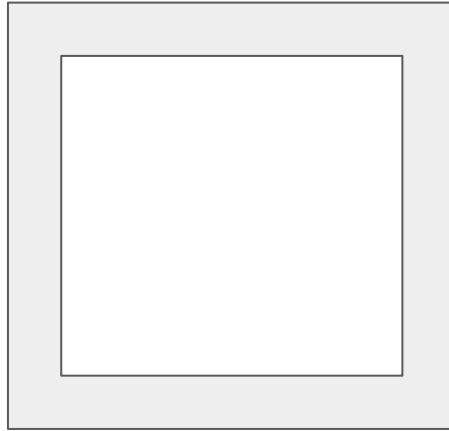
Directions: Cut and paste the events and put them in order of the happened in the story.



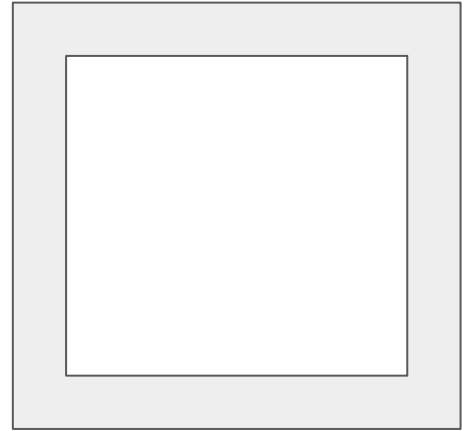
1.



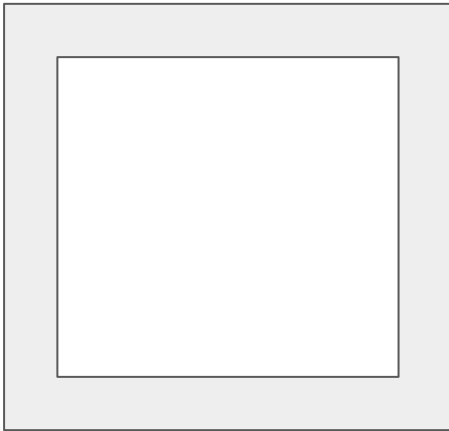
2.



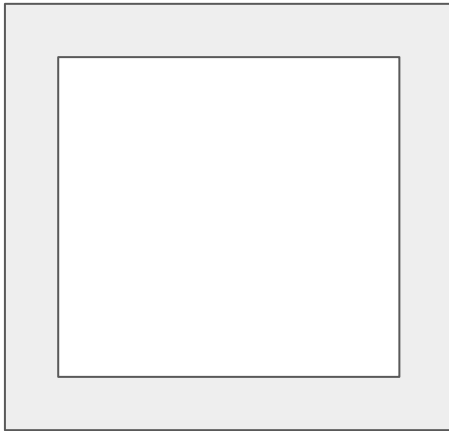
3.



4.



5.



6.

